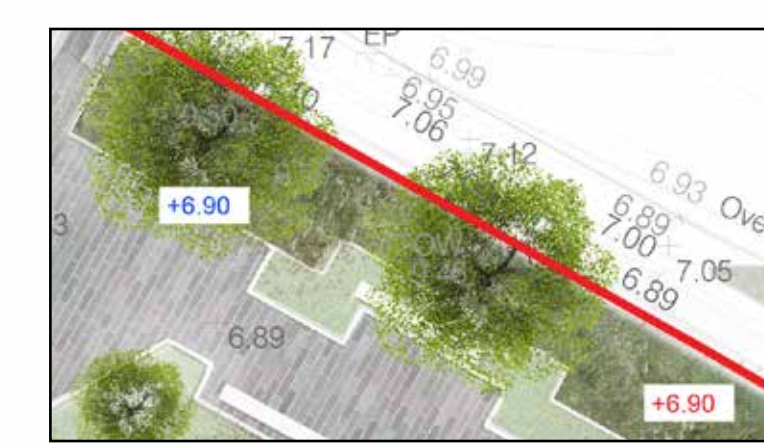
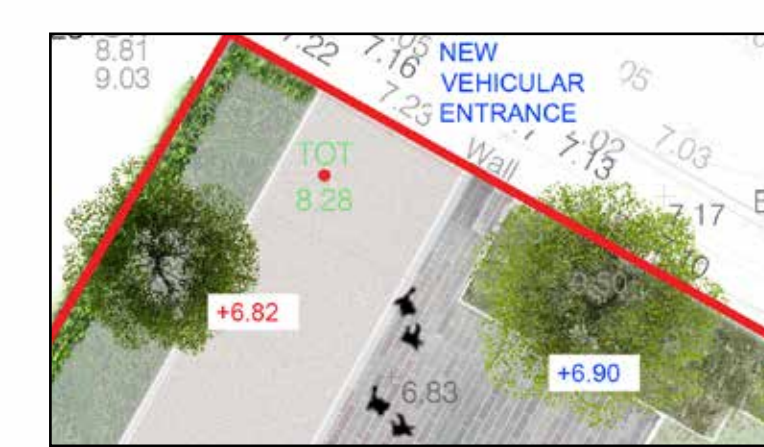


ALL EXISTING TREES ASSOCIATED WITH HOWTH CASTLE ENTRANCE DRIVEWAY ASSESSED AND ARE RETAINED WITHIN FUTURE PROPOSALS (REFER TO ARBORIST REPORT)



PROPOSED TREES TO SOUTH OF EXISTING WALL OF CONSERVATION VALUE (RETAINED). PLANTING BEDS WITH SEATING INSETS (REFER TO LANDSCAPE REPORT)



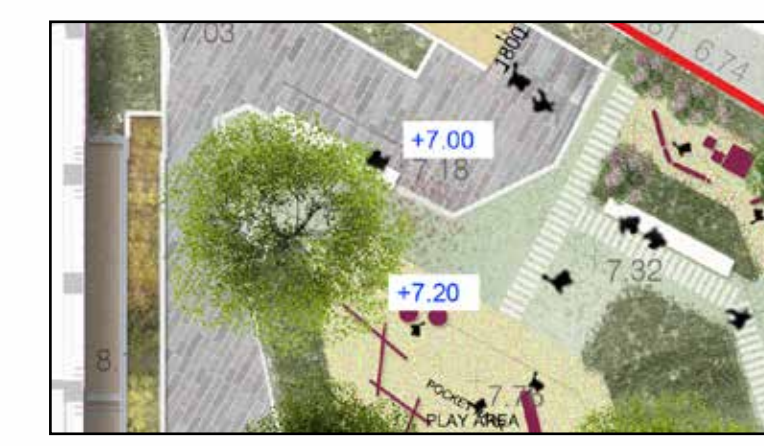
MAIN VEHICULAR ENTRANCE AND SIDE PEDESTRIAN ENTRANCE TO SCHEME FROM HOWTH ROAD. PROPOSED C.1.8M HIGH BEECH HEDGE TO WESTERN BOUNDARY COMBINED WITH SEMI MATURE TREE PLANTING WITH LIGHT CANOPY (GLEDITSIA)



PLANTING ISLAND WITHIN PUBLIC OPEN SPACE. GRASS LAWN FRAMED BY BOTANICAL SPECIES MIX. LARGE UNIT STONE PAVERS CUTTING ACROSS ISLAND TOWARDS COMMUNAL OPEN SPACE AREAS.



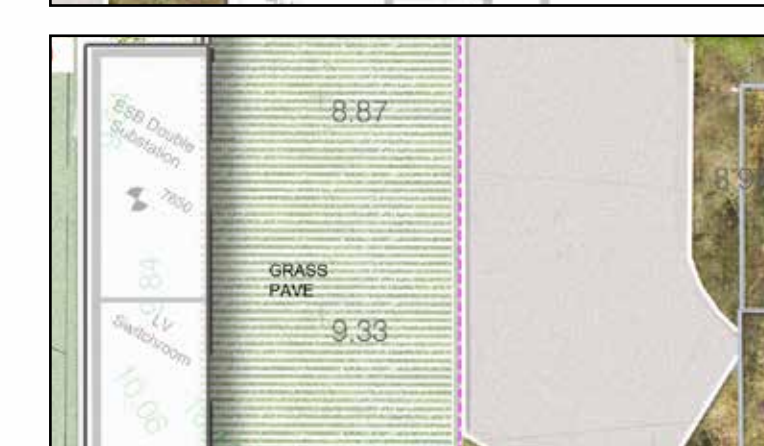
WIDE AREA OF BUFFER PLANTING TO MAINTAIN PRIVACY TO GROUND LEVEL RESIDENTIAL AREAS. GRASS LAWN TO NORTH OF BUFFER PLANTING TO ALLOW FOR INFORMAL SEATING AND ACTIVITY AREAS.



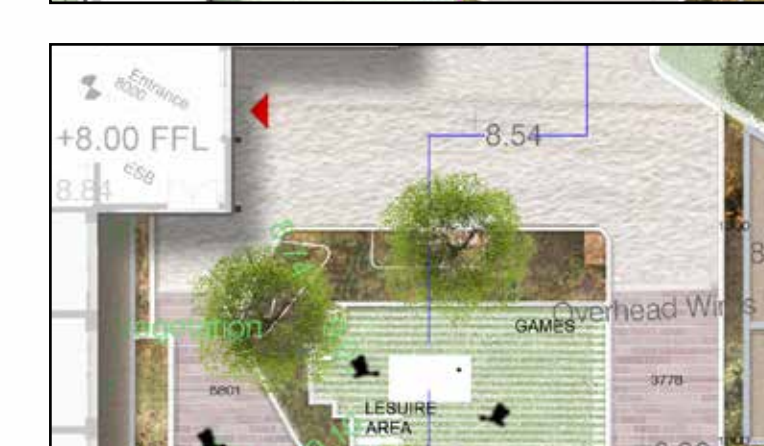
FORMAL PLAY AREA OPEN TO RESIDENTS AND PUBLIC. PLAY HUTS AND BALANCING EQUIPMENT AIMED AT 3-10 YEARS OLD. AREA IS WELL SCREENED BY PLANTING FOR NOISE REDUCTION AND TO ALLOW FOR QUIETER POCKETS FOR PARENTS TO TAKE A SEAT WHILST ALLOWING CHILDREN PLAY TIME



ACCESS TO BIKE STORAGE AREAS AND BASEMENT GROUND LEVEL RESIDENTIAL AREAS HAVE TERRACES SCREENED FROM COMMUNAL AREA BY STEPPED PLANTERS.



ACCESS TO ESB SUBSTATION - SURFACE IN GRASS PAVER FOR MINIMAL IMPACT.



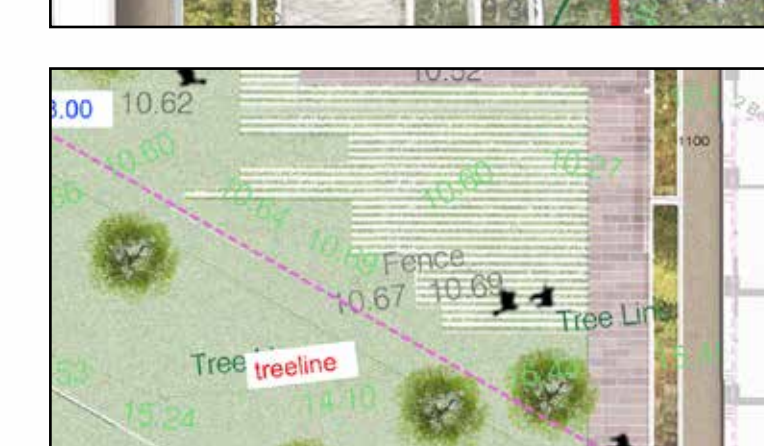
MAIN ENTRANCES TO RESIDENTIAL AREAS ARE FRAMED BY STONE PAVEMENT MATS. COMMUNAL AREAS ARE PAVED WITH SMALLER UNIT SUCH AS BRICK ALLOWING A SMALLER SCALED 'GARDEN' DESIGN TO PREVAIL.



THROUGHOUT THERE ARE NUMEROUS AREAS SET ASIDE FOR DIFFERENT USES BY RESIDENTS. SCREENED SEATING AREA IN QUIETER LOCATIONS, EXERCISE AREAS AND BBQ AREAS TO ALLOW FOR RESIDENTS TO GATHER IN LARGER GROUPS.



PROPOSED TERRACES COMPOSED OF BLOCKS WITH EXPOSED AGG. CONCRETE WILL BE HEAVILY PLANTED IN WOODLAND SPECIES MIX. THE TERRACING ALLOWS THE PROPOSAL TO RETAIN AS MANY EXISTING TREES ALONG THE WESTERN BOUNDARY AS POSSIBLE RETAINING THE CHARACTER OF THIS SIDE OF THE SITE.



THE TRANSITION FROM COMMUNAL AREA TO OPEN SPACE TO THE SOUTH OF THE DEVELOPMENT. TRANSITION MARKED BY PAVERS SET INTO GRASS AND THEN TO SOFT LANDSCAPE PROPOSALS. OUTSIDE OF THE DEVELOPMENT AREA WE PROPOSE EXTENSIVE PLANTING TO OF NATIVE SPECIES TO REPLACE THOSE BEING REMOVED THROUGH LEVEL CHANGES. GRASSLAND AREAS AND WILDFLOWER MEADOWS ALSO FORM PART OF THE PROPOSAL

EXISTING WOODLAND BOUNDARIES REFORMED AND REINFORCED WITH WHIP PLANTING - NATIVE SPECIES, OCCASIONAL SEMI MATURE TREE

FORMAL GRASS TERRACES 1:2 BULB PLANTING

RELOCATION OF REMOVED TREES WHERE POSSIBLE AND REINFORCEMENT WITH PROPOSED BELT OF NATIVE SPECIES WHIPS (SCOTS PINE)

HAWTHORN, BLACKTHORN, OAK

UPPER LEVELS MANAGED AS WILD GRASSLAND WITH MOWING REGIME OF 1:2 TIMES A YEAR

EXISTING WOODLAND BOUNDARIES REFORMED AND REINFORCED WITH WHIP PLANTING - NATIVE SPECIES, OCCASIONAL SEMI MATURE TREE

EXISTING TREES OUTSIDE OF SITE BOUNDARY (ALL INCLUDED IN ASSESSMENT BY ARBORIST)

Client: GLL P&S Holdings Limited		Draw: D19119-CD-12		Bernard Seymour Landscape Architects	
Project: Residential Housing/Development, located at Howth, Dublin		Rev: 4		4 Mary's Abbey, Dublin 7	
Drawing Title: Landscape Masterplan		Issue: PLANNING		+00 353 1 8747764 +00 353 1 8747875 info@bslarch.com	
Drawn by: MS	Checked by: BS	Date: 05.2021	Scale: 1/250 @ A0	<p>The drawings are the copyright of the Landscape Architects. Unless otherwise stated all dimensions are in millimetres. Where dimensions are not given, design and materials will be in accordance with the standards set by the Landscape Architects.</p> <p>If the drawing includes conflicts (C) the Landscape Architects the conflict must be referred to the Landscape Architects. All dimensions must be checked on site. The Landscape Architects must always be the collector of any dimensions taken on work proposals.</p>	